

HOMEWORK: MATH 162

HW 0 (Due Friday, January 16):

- (1) Briefly relate (in one or two paragraphs) information about yourself that will help me get to know you. If you wish, you may let the following questions serve as a guide: When did you take Math 161 (or its equivalent)?; why are you taking Math 162 now? (for example: *"major requirement"*, *"just for fun because I love mathematics"*, *"nothing else fits my schedule"*, *"my parents forced me to take this course"*, *"I am looking for an easy A to raise my gpa"*); what is your major?; what is your career goal?; what has been the nature of your previous experience with math either in high school or in college (that is, have you enjoyed math in the past? Do you like to see applications more than theory, or do you prefer theory?). (Please eMail your response to me no later than Friday. For "Subject" be certain to write "**Math 162 homework 0**")
- (2) Obtain an account in [MyMathLab](#).
- (3) Register for [Piazza](#).
- (4) Review chapters 2 – 5 of Thomas as needed.

HW I (Due Sunday, January 18th): Begin reading section 6.1 of Thomas. [MML 1](#)

(deadline is midnight on Sunday)



HW II (Due Thursday, January 24th): Read section 6.2 of Thomas. [MML 2](#) (deadline is midnight on Thursday)



Australia Day, Jan 26, 2015



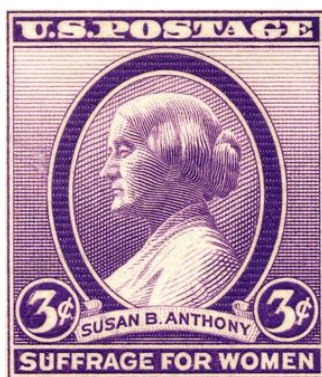
Mozart's birthday: January 27th

HW III (Due Friday, January 30th; extended to Tuesday, February 3rd): Read sections 6.3 and 11.1. [MML 3](#) (deadline is midnight on Friday)



HW IV (Due Friday, February 5th): Read sections 6.4, 6.5 (only material on work) and 11.2 (only material on arc length and surface area.) [MML 4](#) (deadline is midnight on Thursday). *Study for Test I.*





Birthday of Susan B. Anthony

February 15, 1820

HW V (Due Monday, February 16th): Read sections 7.3, 7.4, 8.1, 8.2, and 8.8. Begin reading section 8.9. [MML 5](#) (deadline is Monday, 11:59 pm). Watch [the MIT video on improper integrals](#).



Chinese New Year (Feb 19, 2015)

HW VI (Due Sunday, February 22th): Study section 10.1. Begin reading section 10.2. [MML 6](#) (deadline is Sunday, 11:59 pm). To prepare for our discussion of series (section 10.2), watch [MIT video on numerical series](#).



birthday of Volta (Feb. 19, 1745)



Islam Awareness Week - Loyola University Chicago

HW VII (Due Monday, March 9th): Study sections 10.2 and 10.4. Begin reading section 10.3. [MML 7](#) (deadline is Wednesday, 11:59 pm). *Prepare for Test II.*



Daylight savings time begins Sunday, March 8, 2015 at **2 am**.
Clocks are turned **forward** 1 hour.



Purim, March 5th



International Women's Day, March 8th

HW VIII (Due Saturday, March 14th): Study sections 10.3, 10.4 and 10.5. Begin reading section 10.3. [MML 8](#) (deadline is Saturday, 11:59 pm). *Prepare for Test II.*

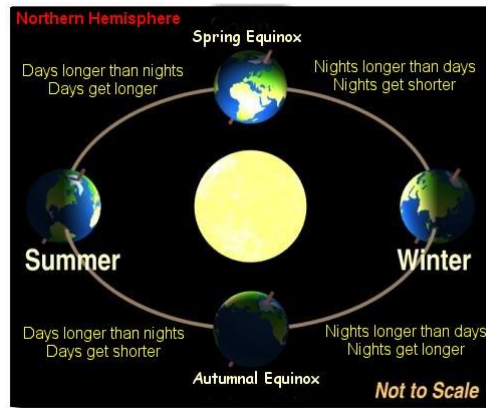


World Kidney Day, March 12

HW IX (Due Sunday, March 22nd): Study sections 10.6 and 10.7. Begin reading section 10.8. [MML 9](#) (deadline is Sunday, 11:59 pm).



St. Patrick's Day, March 17th



Vernal Equinox: Friday, March 20, 2015 at 5:45 PM CDT



National Doctors' Day, 30 March



J. S. Bach, 31 March 1685 - 1750



[Emmy Noether](#) (23 March 1882 - 1935)

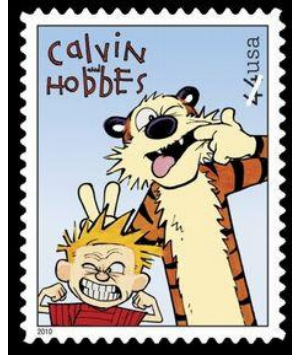
HW X (Due Monday, April 7th): Review section 10.7. Study section 10.8. Begin reading section 10.9. [MML 10](#) (deadline is Tuesday, 11:59 pm).



National Doctors' Day, 30 March



Cesar Chavez Day (March 31st)



April Fools' Day

HW XI (Due Wednesday, April 13th): Study carefully sections 10.8, 10.9 and 10.10.

Solve HW XI in [WileyPlus](#). This is due on Wednesday at 11:59 pm.

Prepare for Test III.

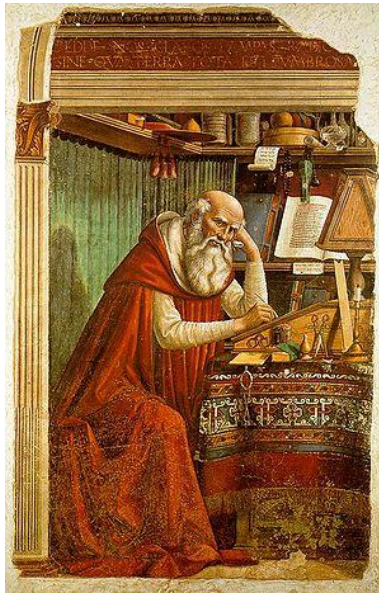


HW XII: Review for the *Final Exam* (Saturday, 2 May). Study practice finals A and B; review the three tests and the nine quizzes.



It's got to be the going, not the getting there that's good. – Harry Chapin, [GO GREYHOUND](#)

To travel hopefully is a better thing than to arrive. – Robert Louis Stevenson



St. Jerome in His Study

Domenico Ghirlandaio (1480)

[COURSE HOME PAGE](#)

[DEPARTMENT HOME PAGE](#)

[LOYOLA HOME PAGE](#)